



PRESS CONTACT  
Daniel Millrath, Product Marketing Specialist

ODU GmbH & Co. KG  
Pregelstraße 11 · 84453 Mühldorf a. Inn  
Phone: +49 8,631 6156-1288  
E-mail: daniel.millrath@odu.de

## PRESSINFORMATION

Mühldorf a. Inn, 26.11.2025

### ODU-MAC® Black-Line Compact Class: Mass Interconnect extension

With the **ODU-MAC® Black-Line Compact Class**, ODU is expanding its proven Black-Line portfolio with a compact and cost-effective solution for complex inspection and test requirements. **The modular Mass Interconnect system was specially developed for applications that require maximum flexibility, contact density and reliability** in a confined space.

The up to 4,608 signal points make the existing variants of the ODU-MAC® Black-Line real heavyweights in the field of test and measurement. However, not every customer needs the full range of existing products:

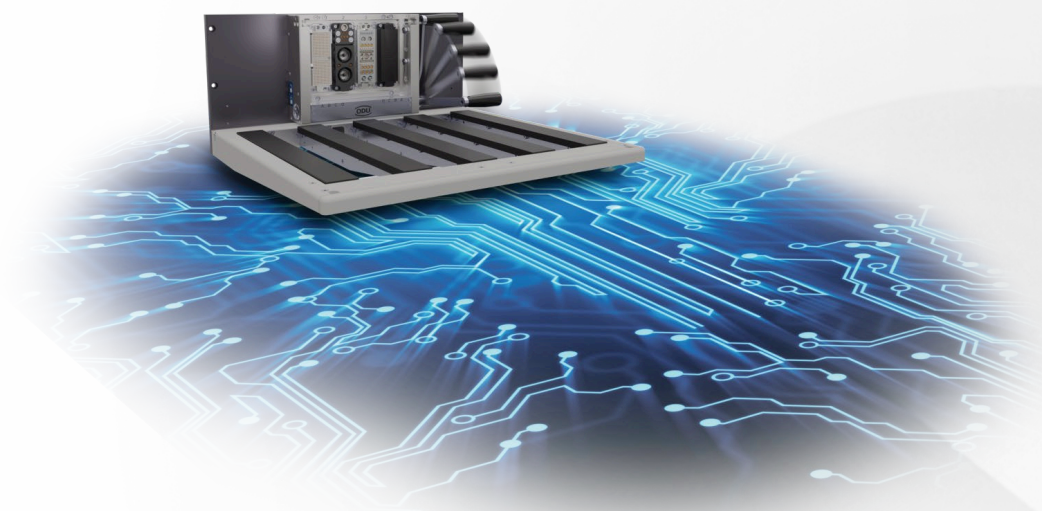
	Compact Class	Basic Class	Advanced Class
Max. signals	<b>1,536</b>	2,304	4,608
Height units	<b>4</b>	3	5
Number of frames	<b>4</b>	12	12

### Compact, flexible, safe

Designed as a "half interface", the Compact Class requires only half the width of a classic 19 inch test cabinet. With **4 height units** it offers space for **four ODU-MAC® Blue-Line frames** and with four signal blocks, for example, **up to 1,536 signal points**. If you need to transmit a lot of signals but need to limit the space required, the Compact Class is the right choice. In addition to a more compact size, the connection solution is characterized by its user-friendliness. The mechanical coding prevents the receiver from mismatching and, thanks to the condition monitoring by means of a microswitch, it is possible to determine whether the docking process has been completed - making testing processes more convenient and safer.

### Maximum modularity in a compact design

The new Compact Class can be **equipped with the ODU-MAC® Blue-Line modules** and supports a wide range of contact technologies: Signals, power, high-current, high-voltage, HF signals (coax), compressed air, fluids, data and fiber optics. It thus offers a universal platform for a wide range of test requirements - from end-of-line test benches to validation and development environments.



*The new Compact Class of the ODU-MAC® Black-Line offers compact mass interconnect performance.*

### One receiver - three options

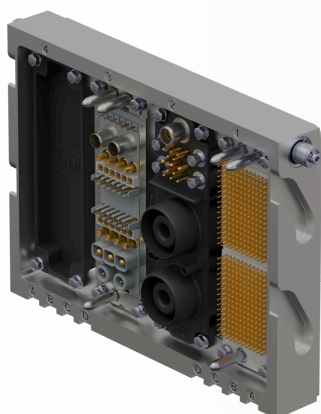
You can choose from three different options for a Compact Class receiver:

**Housing Option, ITA Option or a Connector Option with a ODU-MAC® Rapid.**

The housing option can be used as a "large plug": The robust and lightweight aluminum cover can be equipped with a handle for ergonomic handling and rests securely on the hooks which are attached to the left and right of the receiver. Using the hand lever, which can be attached to either side of the receiver, the interface is closed to establish a reliable connection.



*The "Housing Option" of the new ODU-MAC® Black-Line Compact Class enables an easy connection via hand lever.*



*Thanks to the ITA, common test systems can be easily connected.*

with a practical half-shell principle, which facilitates assembly. The proven spindle locking system provides haptic and acoustic feedback as soon as the connector is in the final position.

It can also be used with an **ITA (Interchangeable Test Adapter)**. 'Dock. Test. Done.' in small format.

The use of **ODU-MAC® Blue-Line frames** in the Compact Class also makes it possible to connect up to four **ODU-MAC® Rapid** connectors to the receiver. The Rapid series is designed



*The ODU-MAC® Rapid can be directly connected to the new compact class.*

### Power for the highest demands

Another special feature is the fitting of the **Powerblock**. This has two 16 mm Lamtac® Flex contacts, through which a total of up to 600 amps (2 bridged contacts via busbar) can be transmitted per Powerblock. It also offers additional space for transmitting signals (sense), data, fluids or compressed air. This makes the Compact Class the first choice when it comes to transmitting the highest possible currents in the smallest possible installation space.



## **ODU Group: Global representation with perfect connections**

ODU is one of the leading international suppliers of connector systems and employs around 2.800 employees worldwide. In addition to its company headquarters in Muehldorf a. Further production and product development sites are located in Sibiu / Romania, Shanghai / China, Tijuana / Mexico and Camarillo / USA. ODU combines all relevant areas of expertise and key technologies including design and development, machine tooling and special machine construction, molding, stamping, turning, surface engineering, assembly, and cable assembly. The ODU group sells its products globally through an international distribution network This includes its own sales companies in China, Denmark, Germany, France, Hong Kong, Italy, Japan, Korea, Austria, Sweden, the UK and the USA, as well as numerous global sales partners. Connectors from ODU ensure the reliable transmission of power, signals, data and media in numerous demanding application areas: in medical technology, military and security technology, automotive as well as in industrial electronics or test and measurement.